



TOWN OF CHESHIRE  
DEPARTMENT OF PUBLIC WORKS/ENGINEERING  
84 SOUTH MAIN STREET, CHESHIRE, CONNECTICUT 06410  
Telephone (203) 271-6650 Fax (203) 271-6659

---

**WEST MAIN STREET STREETScape IMPROVEMENTS  
PHASE 3, WILLOW STREET CORRIDOR**

**RFP #2223-29**

**ADDENDUM NO. 1**

**June 16, 2023**

---

**NOTICE TO ALL BIDDERS:**

The attention of all bidders submitting proposals for this RFP is called to the following Addenda to the specifications and plans. The items set forth herein, whether of omission, addition or substitution are to be included in, and form part of the specifications and plans of the above-named project for bids to be received as advertised.

The following clarifications, modifications, deletions and additions are hereby incorporated into and become part of the Contract Documents.

**RESPONSES TO QUESTIONS RECEIVED:**

**Question 1:** Can I submit a bid solely for the fencing aspect of the project?

**Response 1:** **No. the scope of work consists of furnishing sidewalks on the west side of Willow Street. Work includes demolition, erosion control, earth excavation, site grading, installation of sidewalks, installation of site furniture & fencing, installation of site lighting, and loaming & seeding of disturbed areas.**

**Question 2:** For the Site lighting is the site contractor responsible for conduit and wire? There is no detail showing where the electrical is coming from.

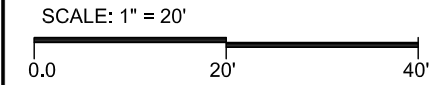
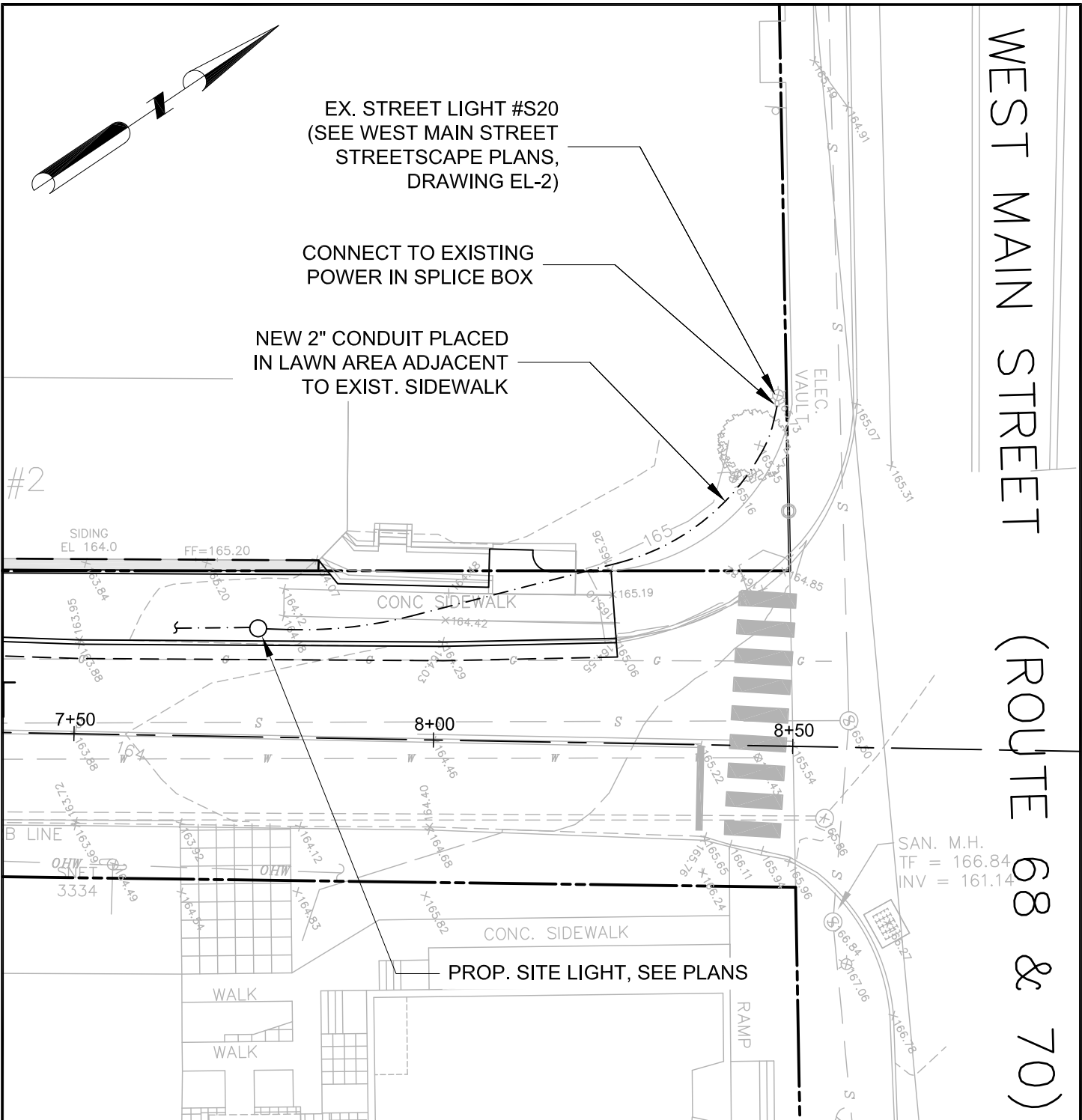
**Response 2:** **See attached Sk-C1 and drawings EL-1 thru EL-3 from the West Main Street Streetscape Project c. 2010. Power shall be obtained from the existing splice box at West Main Street and Willow Street. Contractor shall confirm sufficient power is available from this location and shall provide an Electrical Plan for the new lights along Willow Street as outlined in Specification Section 26-00-00. The Electrical Plan shall be signed by a Professional Engineer licensed in the State of Connecticut and shall be reviewed and approved by Town of Cheshire Building Department prior to installation.**

**ATTACHMENTS:**

1. Sketch SK-C1 "Site Lighting Power Source" dated June 15, 2023 prepared by Cabezas DeAngelis Engineers & Surveyors. (1 Sheet)
2. Electrical Plan for West Main Street Streetscape Improvements Phase II dated March 11, 2010 prepared by Silver/Petrucci & Associates. (3 Sheets)

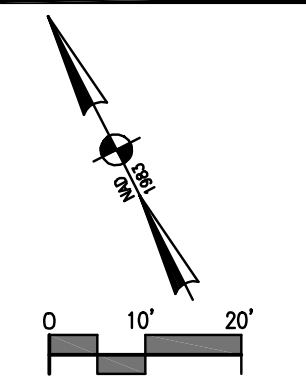
**END OF ADDENDUM NO. 1**

# WEST MAIN STREET (ROUTE 68 & 70)



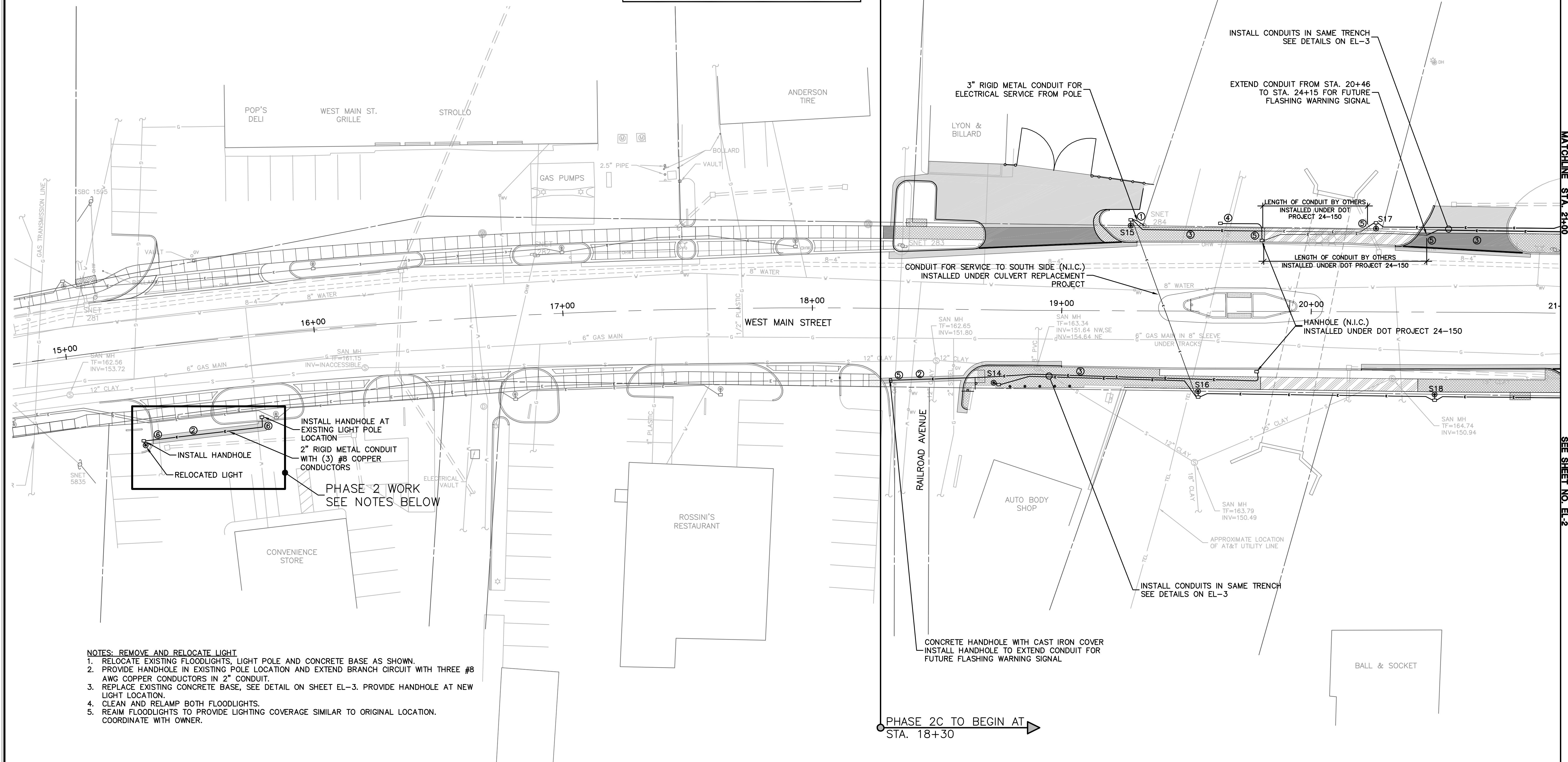
**Cabezas DeAngelis**  
 ENGINEERS & SURVEYORS  
 78 ELM STREET, BRIDGEPORT, CT 06604  
 P: 203 330 8700 • F: 203 330 8701

<b>SITE LIGHTING POWER SOURCE</b>	
WEST MAIN STREET STREETScape IMPROVEMENTS PHASE 3 - WILLOW STREET CORRIDOR STATE RTE. 68 & 70 TO #31 WILLOW STREET CHESHIRE, CONNECTICUT	
DATE: 15 JUNE 2023	<b>SK-C1</b>



- ELECTRICAL LEGEND**
- ORNAMENTAL STREET LIGHT
  - HANDHOLE
- PLAN NOTES**
- ① PROVIDE STREET LIGHTING SERVICE RISER AT UTILITY POLE, REFER TO DRAWING EL-3 FOR DETAILS.
  - ② SAWCUT, REMOVE, AND PATCH BITUMINOUS CONCRETE FOR NEW CONDUIT. REFER TO EL-3 FOR DETAILS.
  - ③ PROVIDE TRENCHING AND 2" CONDUIT FOR FUTURE PEDESTRIAN WARNING SIGNAL.
  - ④ END CONDUIT FOR FUTURE USE. CAP UNDERGROUND. WHERE APPLICABLE EXTEND PAST CURBING INTO PAVEMENT REPAIR AREA.
  - ⑤ CONNECT CONDUIT INSTALLED UNDER PHASE 2 STREETScape IMPROVEMENTS TO PREVIOUSLY INSTALLED SECTION OF CONDUIT
  - ⑥ CONTRACTOR TO HAND DIG CONDUIT TRENCH UNDER PHASE 1 INSTALLED GRANITE CURB. CONTRACTOR WILL BE RESPONSIBLE FOR RESETTING ANY DISTURBED EXISTING GRANITE CURBING AT NO ADDITIONAL COST.

- LEGEND**
- CONCRETE UNIT PAVER SIDEWALK/DRIVEWAY
  - ▨ CONCRETE UNIT PAVER SIDEWALK
  - ▩ CONCRETE UNIT PAVER SIDEWALK INSTALLED ON CONCRETE BASE CONSTRUCTED UNDER DOT PROJECT #25-140
  - ▧ CONCRETE UNIT PAVER SIDEWALK INSTALLED ON EXISTING CONCRETE WALK
  - ▤ DETECTABLE WARNING STRIP
  - ▥ SCORED CONCRETE DRIVEWAY APRON
  - FLUSH GRANITE HEADER



INSTALL HANDHOLE AT EXISTING LIGHT POLE LOCATION  
 2" RIGID METAL CONDUIT WITH (3) #8 COPPER CONDUCTORS  
 RELOCATED LIGHT  
 PHASE 2 WORK  
 SEE NOTES BELOW

- NOTES: REMOVE AND RELOCATE LIGHT**
1. RELOCATE EXISTING FLOODLIGHTS, LIGHT POLE AND CONCRETE BASE AS SHOWN.
  2. PROVIDE HANDHOLE IN EXISTING POLE LOCATION AND EXTEND BRANCH CIRCUIT WITH THREE #8 AWG COPPER CONDUCTORS IN 2" CONDUIT.
  3. REPLACE EXISTING CONCRETE BASE, SEE DETAIL ON SHEET EL-3. PROVIDE HANDHOLE AT NEW LIGHT LOCATION.
  4. CLEAN AND RELAMP BOTH FLOODLIGHTS.
  5. REAM FLOODLIGHTS TO PROVIDE LIGHTING COVERAGE SIMILAR TO ORIGINAL LOCATION. COORDINATE WITH OWNER.

SILVER / PETRUCCELLI + ASSOCIATES  
 Architects and Engineers  
 3100 Whitney Avenue, Hamden, CT 06518-2140  
 Tel. 203.230.9007 Fax. 203.230.8227  
 silvpet@comcast.net

**REVISIONS**

NO.	DATE	DESCRIPTION

**ELECTRICAL PLAN**  
**WEST MAIN STREET**  
**STREETScape IMPROVEMENTS**  
**PHASE II - RAILROAD AVENUE TO WARREN STREET**  
 CHESHIRE, CONNECTICUT

RB DESIGNED	EB DRAWN	RB CHECKED
SCALE: 1"=20'		
DATE: MARCH 11, 2010		
MHI PROJECT NO. 1047-36		
CHESHIRE PROJECT NO. 1011-15		

**EL-1**  
 SHEET IN SET: 11 OF 16

← PHASE 2C TO END AT STA. 21+60 PHASE 2A TO BEGIN AT STA. 21+60 →

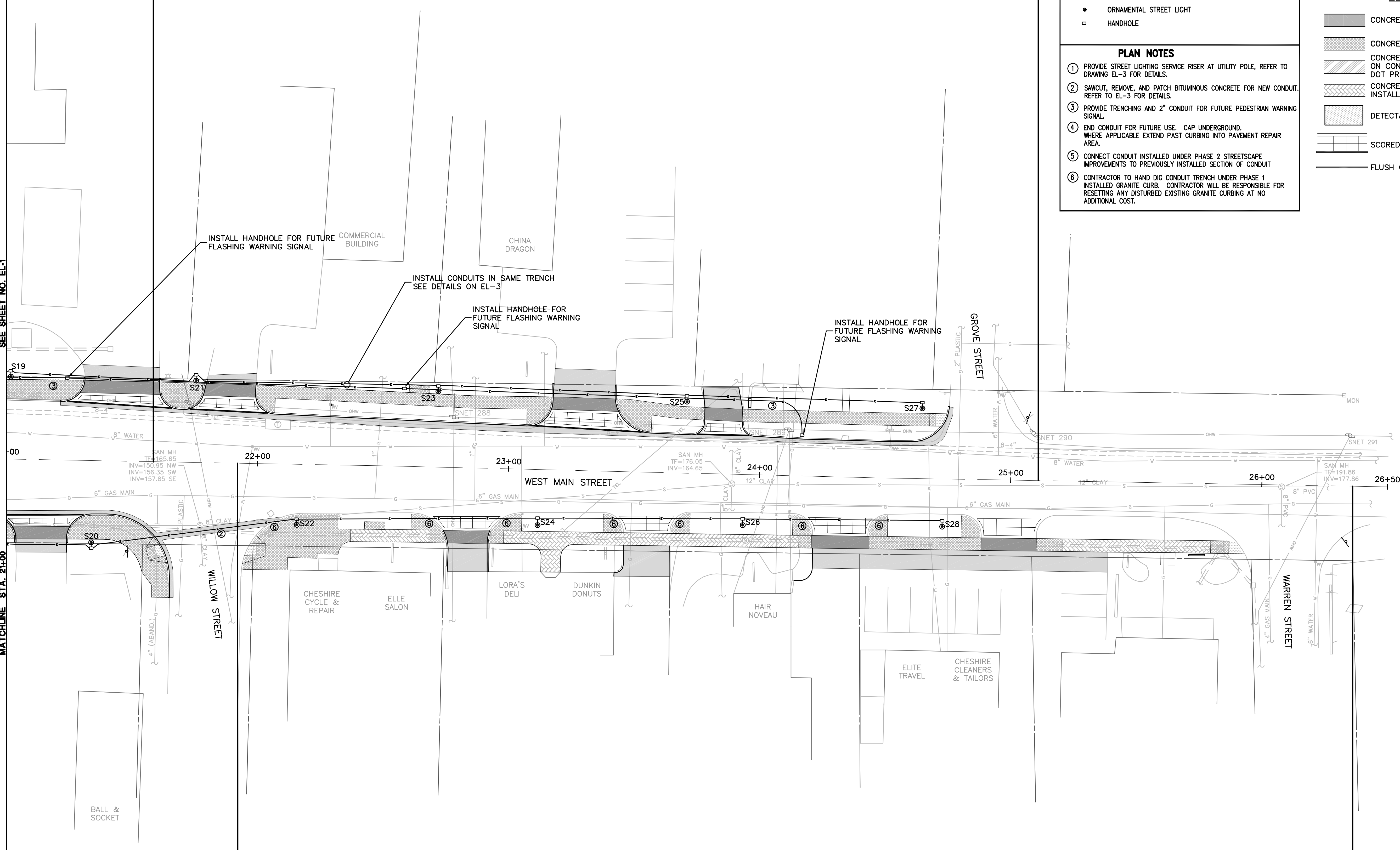
← PHASE 2A TO END AT STA. 26+10 →

SEE SHEET NO. EL-1

MATCHLINE STA. 21+00

← PHASE 2C TO END AT STA. 21+90 PHASE 2B TO BEGIN AT STA. 21+90 →

← PHASE 2B TO END AT STA. 26+34 →



**ELECTRICAL LEGEND**

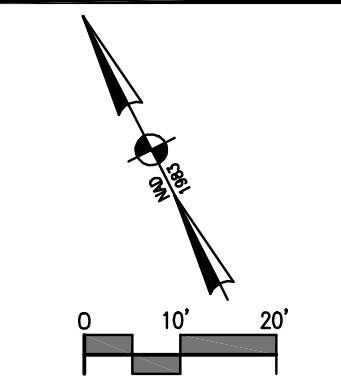
- ORNAMENTAL STREET LIGHT
- HANDHOLE

**PLAN NOTES**

- ① PROVIDE STREET LIGHTING SERVICE RISER AT UTILITY POLE, REFER TO DRAWING EL-3 FOR DETAILS.
- ② SAWCUT, REMOVE, AND PATCH BITUMINOUS CONCRETE FOR NEW CONDUIT, REFER TO EL-3 FOR DETAILS.
- ③ PROVIDE TRENCHING AND 2" CONDUIT FOR FUTURE PEDESTRIAN WARNING SIGNAL.
- ④ END CONDUIT FOR FUTURE USE. CAP UNDERGROUND, WHERE APPLICABLE EXTEND PAST CURBING INTO PAVEMENT REPAIR AREA.
- ⑤ CONNECT CONDUIT INSTALLED UNDER PHASE 2 STREETSCAPE IMPROVEMENTS TO PREVIOUSLY INSTALLED SECTION OF CONDUIT.
- ⑥ CONTRACTOR TO HAND DIG CONDUIT TRENCH UNDER PHASE 1 INSTALLED GRANITE CURB. CONTRACTOR WILL BE RESPONSIBLE FOR RESETING ANY DISTURBED EXISTING GRANITE CURBING AT NO ADDITIONAL COST.

**LEGEND**

- [Pattern] CONCRETE UNIT PAVER SIDEWALK/DRIVEWAY
- [Pattern] CONCRETE UNIT PAVER SIDEWALK
- [Pattern] CONCRETE UNIT PAVER SIDEWALK INSTALLED ON CONCRETE BASE CONSTRUCTED UNDER DOT PROJECT #25-140
- [Pattern] CONCRETE UNIT PAVER SIDEWALK INSTALLED ON EXISTING CONCRETE WALK
- [Pattern] DETECTABLE WARNING STRIP
- [Pattern] SCORED CONCRETE DRIVEWAY APRON
- [Pattern] FLUSH GRANITE HEADER



Engineering  
Architecture  
and Environmental Science

**MILONE & MACBROOM**

99 Realty Drive  
Cheshire, Connecticut 06410  
(203) 271-1731 Fax (203) 272-9733  
www.miloneandmacbroom.com

**REVISIONS**

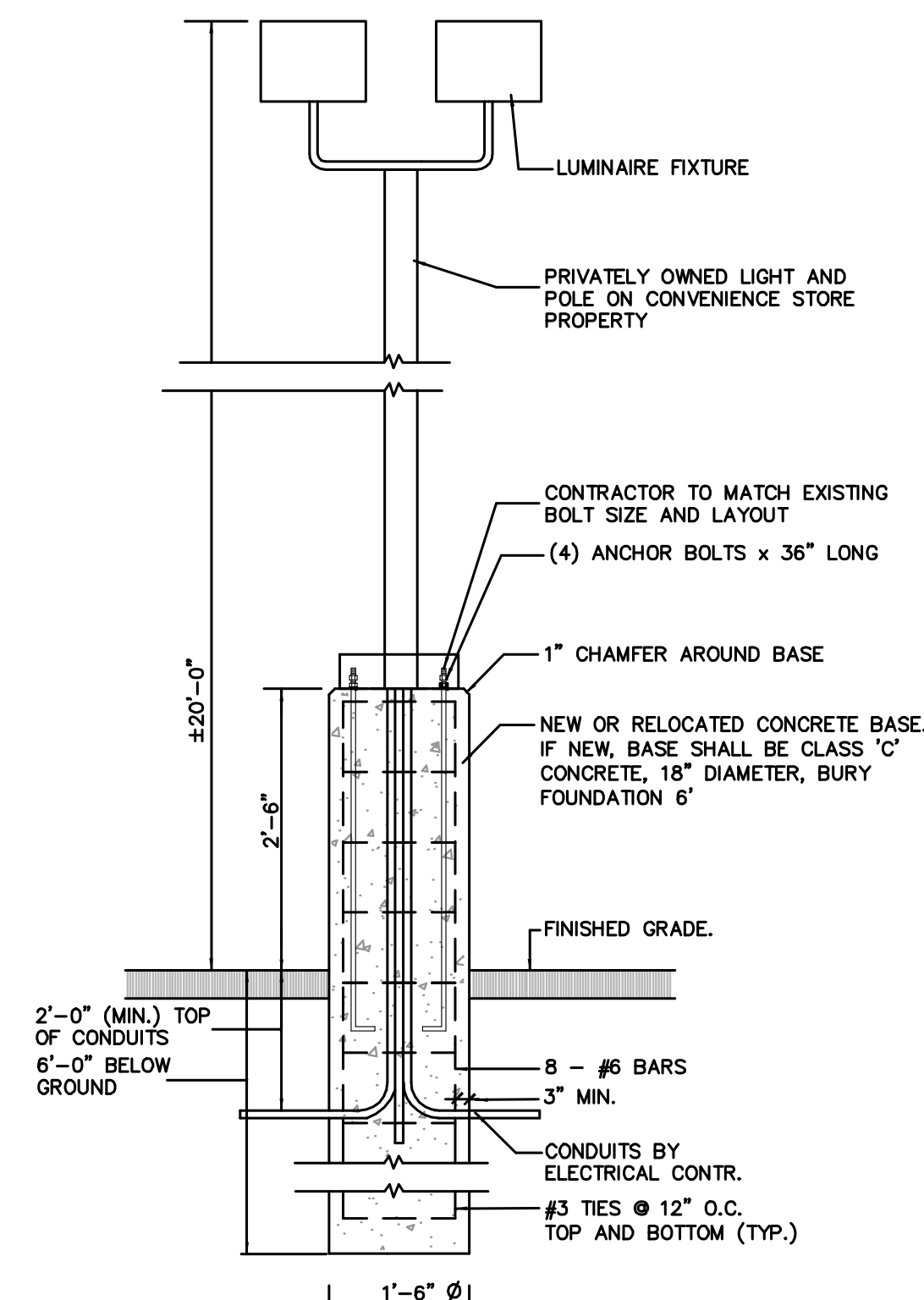
NO.	DATE	DESCRIPTION

**ELECTRICAL PLAN**

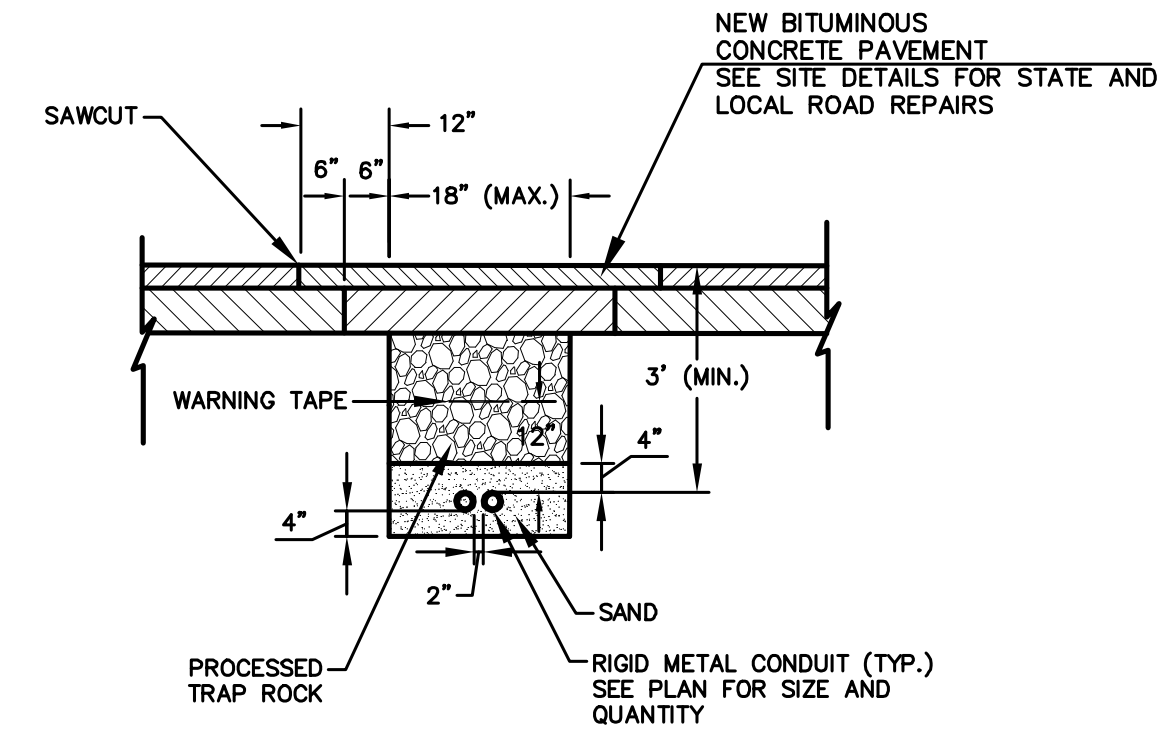
**WEST MAIN STREET**  
**STREETSCAPE IMPROVEMENTS**  
**PHASE II - RAILROAD AVENUE TO WARREN STREET**  
CHESHIRE, CONNECTICUT

RB DESIGNED	EB DRAWN	RB CHECKED
SCALE: 1"=20'		
DATE: MARCH 11, 2010		
MMI PROJECT NO. 1047-36		
CHESHIRE PROJECT NO. 1011-15		

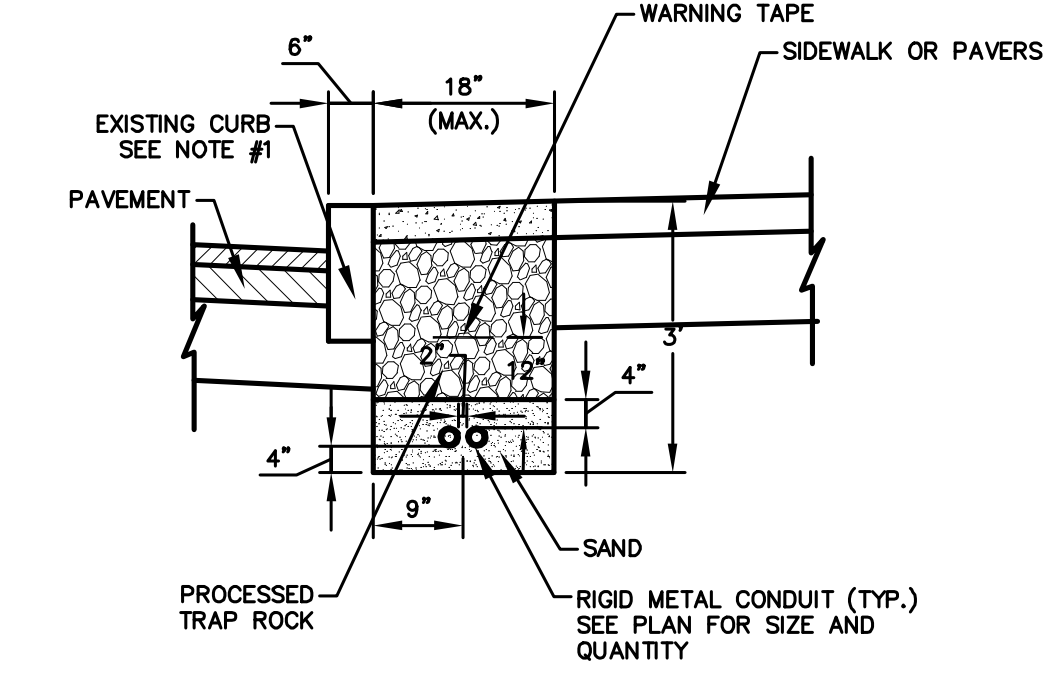




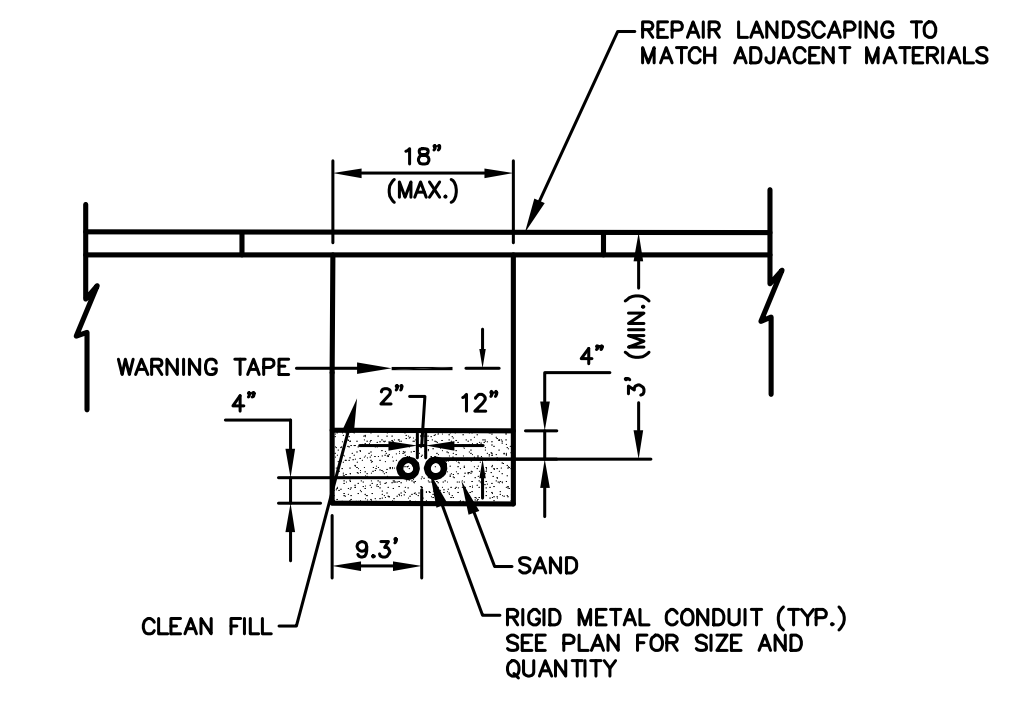
**REMOVE AND RELOCATE LIGHT STANDARD AND LUMINAIRE**  
SCALE: N.T.S.



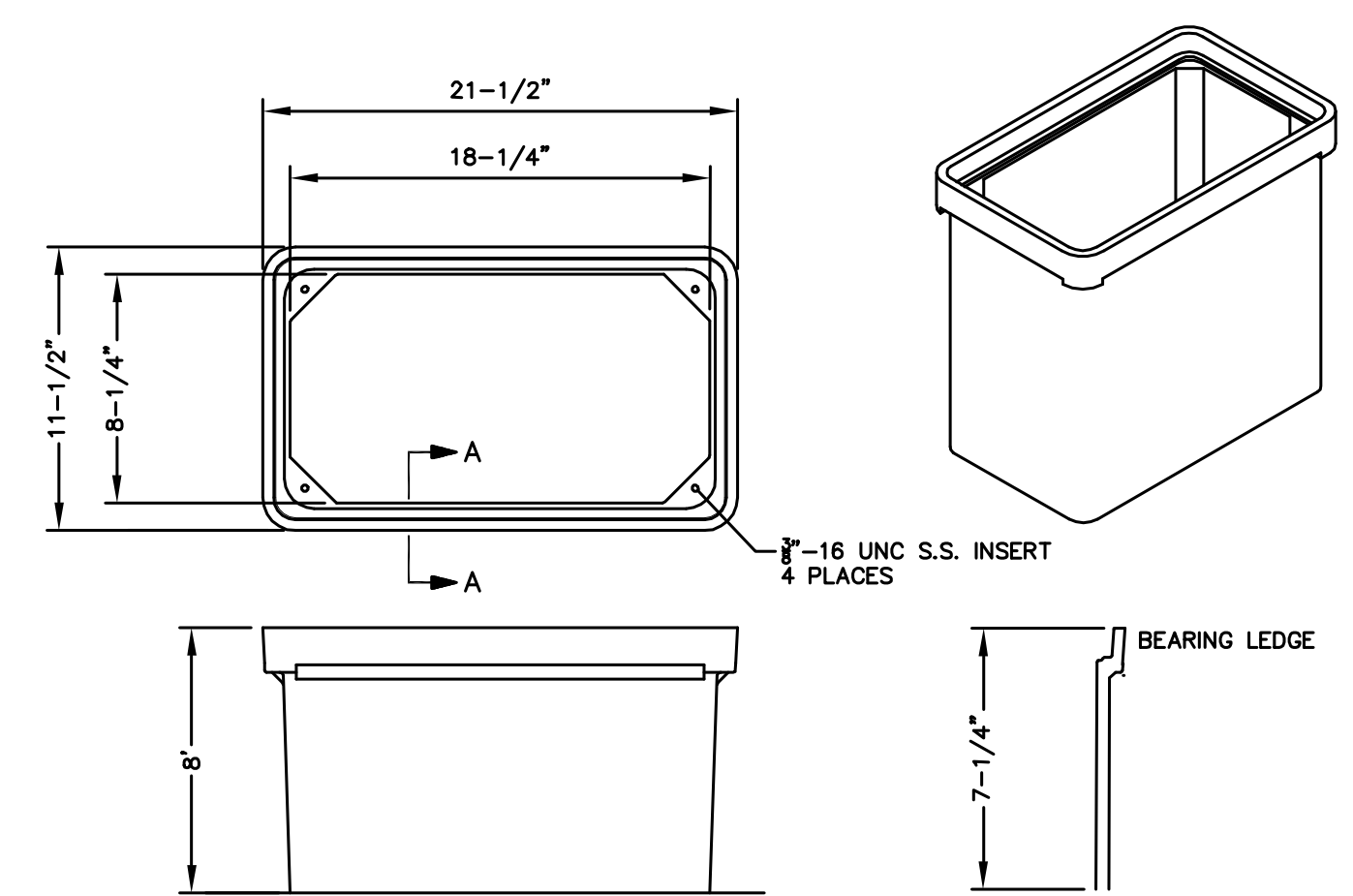
**TYPE I TRENCHING AND BACKFILLING RIGID METAL CONDUIT IN BITUMINOUS PAVEMENT**  
SCALE: N.T.S.



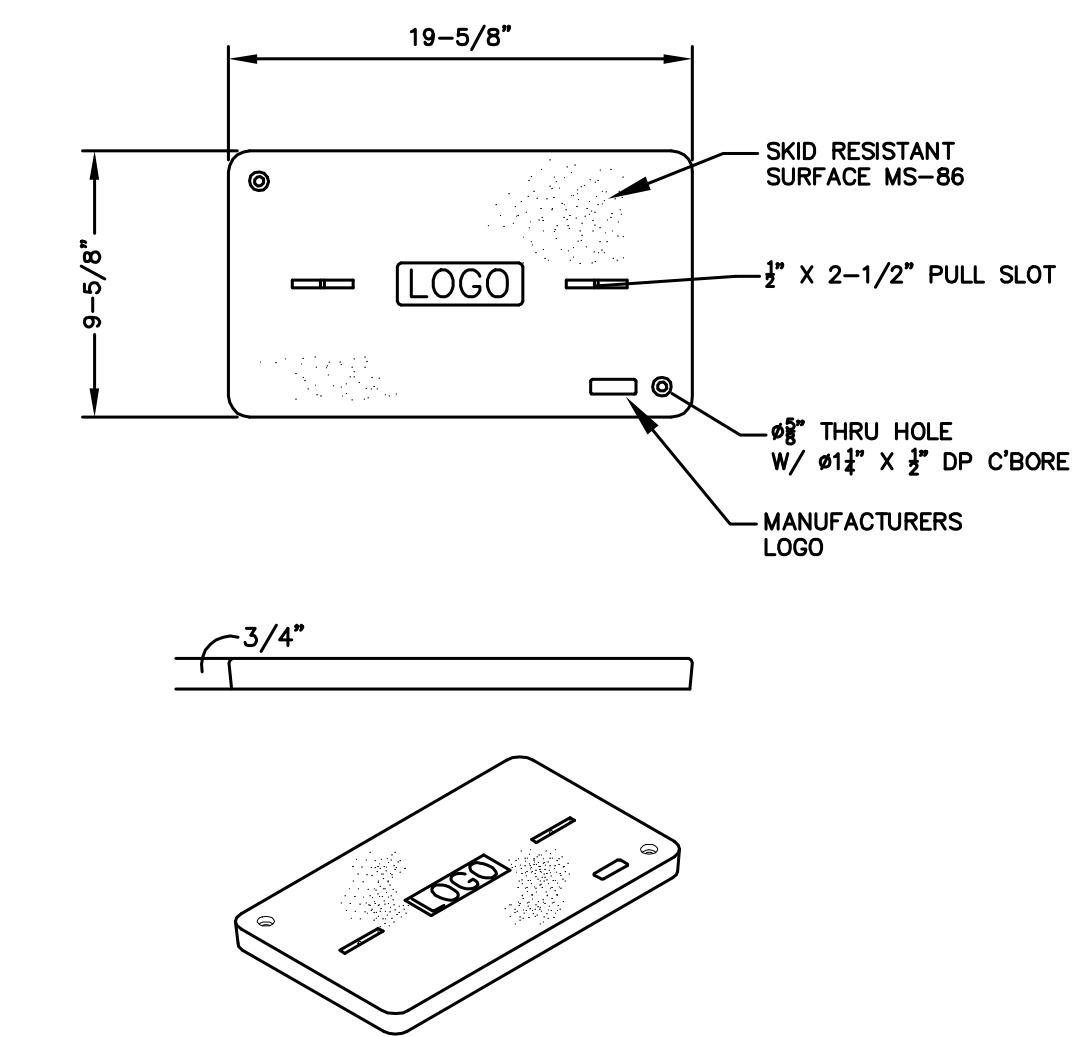
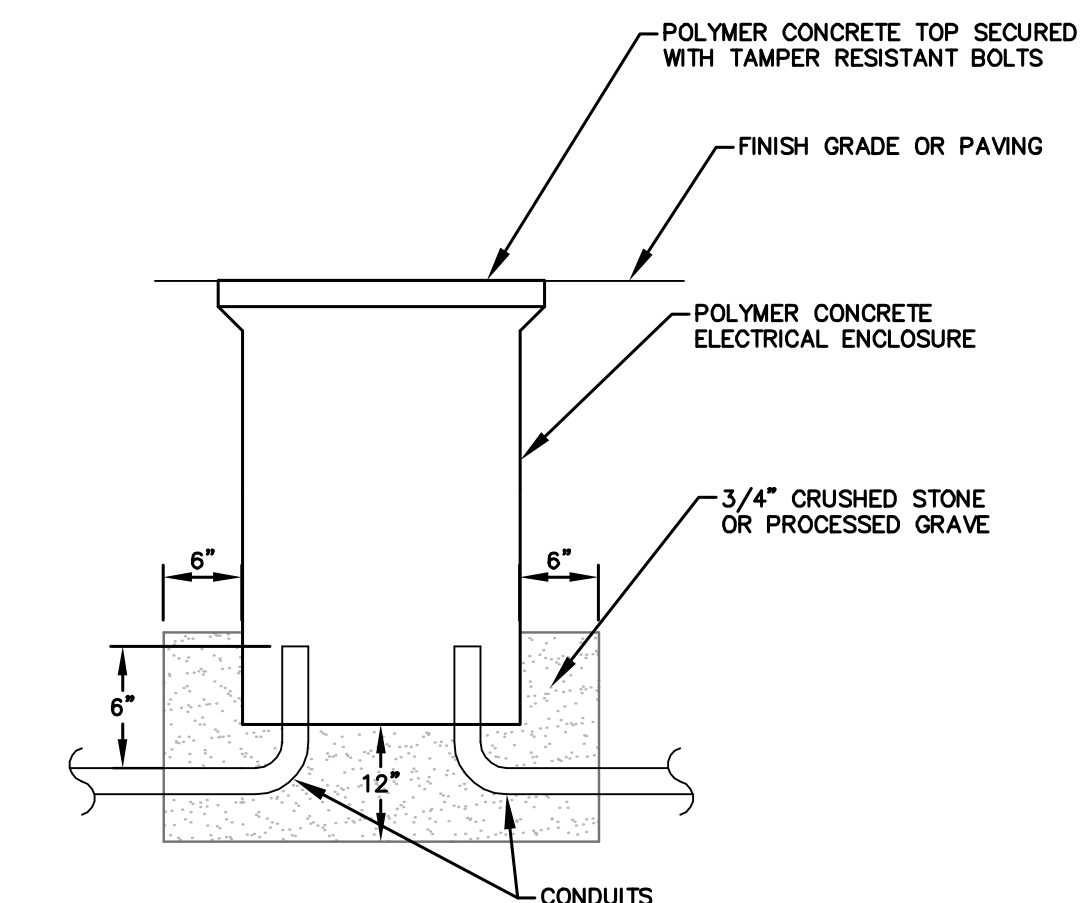
**TYPE III TRENCHING AND BACKFILLING RIGID METAL CONDUIT IN CONCRETE SIDEWALK**  
SCALE: N.T.S.



**TRENCHING AND BACKFILL RIGID METAL CONDUIT IN LANDSCAPING**  
SCALE: N.T.S.

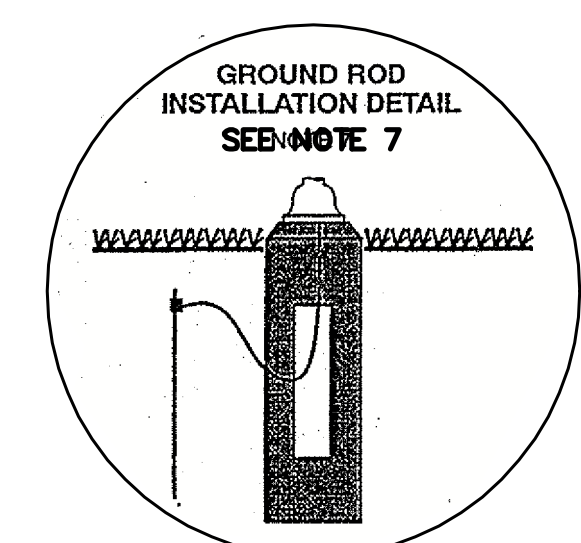


**FIBERGLASS HANDHOLE**  
SCALE: N.T.S.

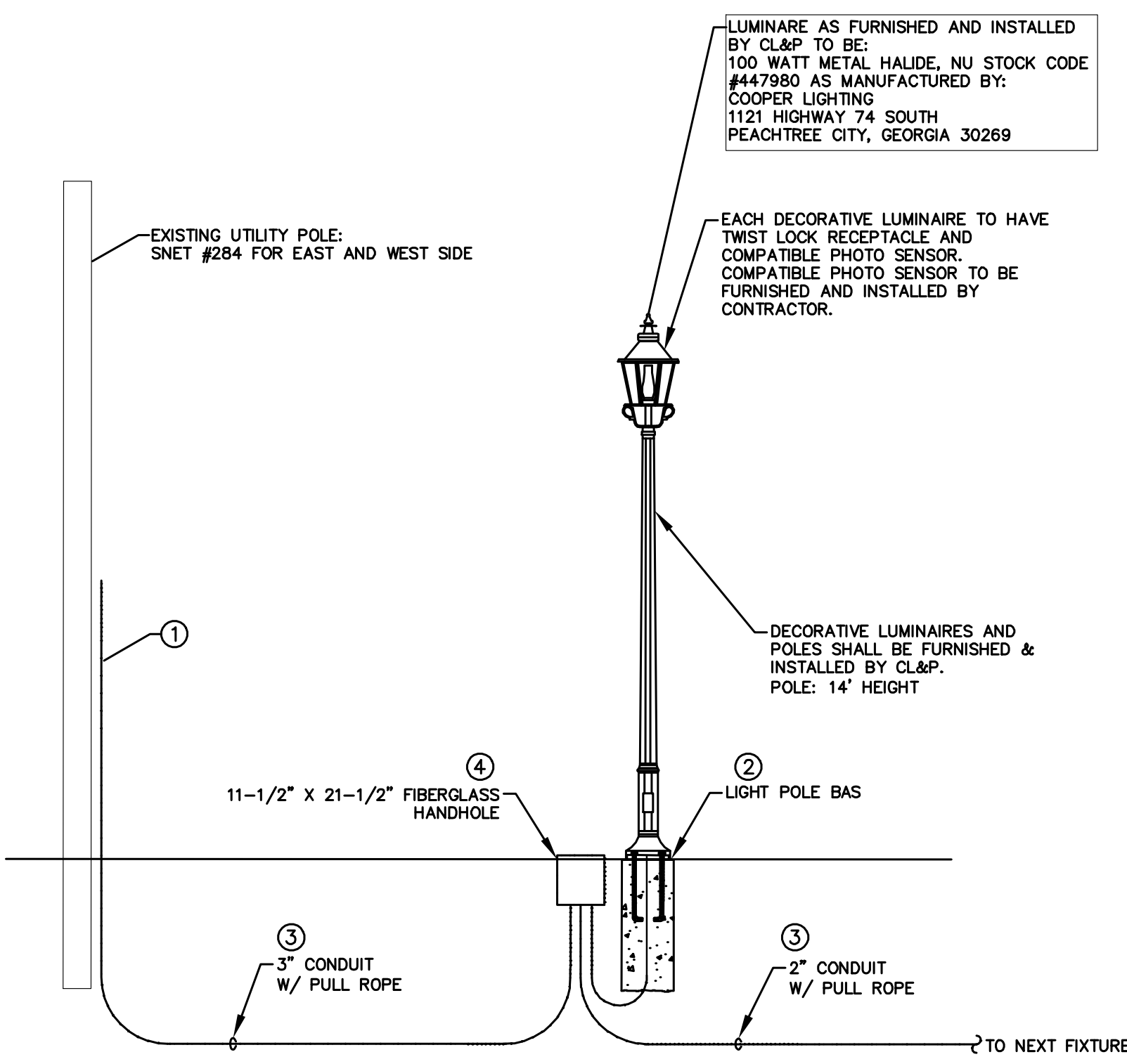


**HANDHOLE BOX COVER DETAIL**  
SCALE: N.T.S.

- NOTES:**
- HANDHOLES SHALL BE SET ON A 12" BED OF COMPACTED CRUSHED STONE OR PROCESSED GRAVEL. BED SHALL EXTEND 6" BEYOND EACH WALL (I.E. 13"x24" BOX, PAD SHALL BE 25"x36"). THE EXTERIOR OF THE BOTTOM BOX SHALL BE BACKFILLED WITH 12" OF COMPACTED BED MATERIAL.
  - HANDHOLES SHALL BE OPEN BOTTOM TYPE. WITH APPROXIMATE NOMINAL DIMENSIONS AS SHOWN WITH A 1 1/4" BOTTOM EDGE. TOP SHALL BE DESIGNED WITH BOLT HOLES, PULL SLOT AND CUSTOM LOGO. BOX COLOR SHALL BE SELECTED FROM MANUFACTURER'S STANDARD COLORS. HANDHOLES SHALL BE UL LISTED TIER 10 (MINIMUM). HANDHOLE COVERS SHALL BE SECURED WITH STAINLESS STEEL PENTA-HEAD BOLTS.
  - PROVIDE PRODUCT DATA SHEETS, WHICH INDICATE DIMENSIONS, DESIGN INFORMATION, LOAD RATING DATA, MATERIAL INFORMATION, ALONG WITH MANUFACTURER'S INFORMATION FOR REVIEW. SUBMIT PRODUCT SAMPLES, IN MANUFACTURER'S STANDARD COLORS TO ALLOW FOR COLOR SELECTION. PRODUCT SAMPLES SHALL HAVE NOMINAL DIMENSIONS OF 4"x6".
  - WHERE REQUIRED, CONTRACTOR SHALL FIELD DRILL HANDHOLES TO INSTALL CONDUITS FOR LIGHT POLES. AFTER INSTALLATION OF CONDUIT, HOLES SHALL BE SEALED, USING MATERIALS AS RECOMMENDED BY THE HANDHOLE MANUFACTURER.
  - LOGO FOR TOP SHALL BE "ELECTRIC" OR "LIGHTING" AS APPROPRIATE IN 2" HIGH LETTERS. PROVIDE A FULL SIZE SAMPLE FOR REVIEW.
  - HANDHOLES IN ROADWAY SHALL BE CONCRETE HANDHOLE TYPE II WITH CAST IRON COVER AS DETAILED ON CTDOT STANDARD SHEET TR-1010.01. HANDHOLES IN GRASS AREAS MAY BE AS NOTED ABOVE OR STANDARD HIGH DENSITY POLYETHYLENE BODY AND COVER EQUAL TO NU STOCK CODE ITEM 0440481.

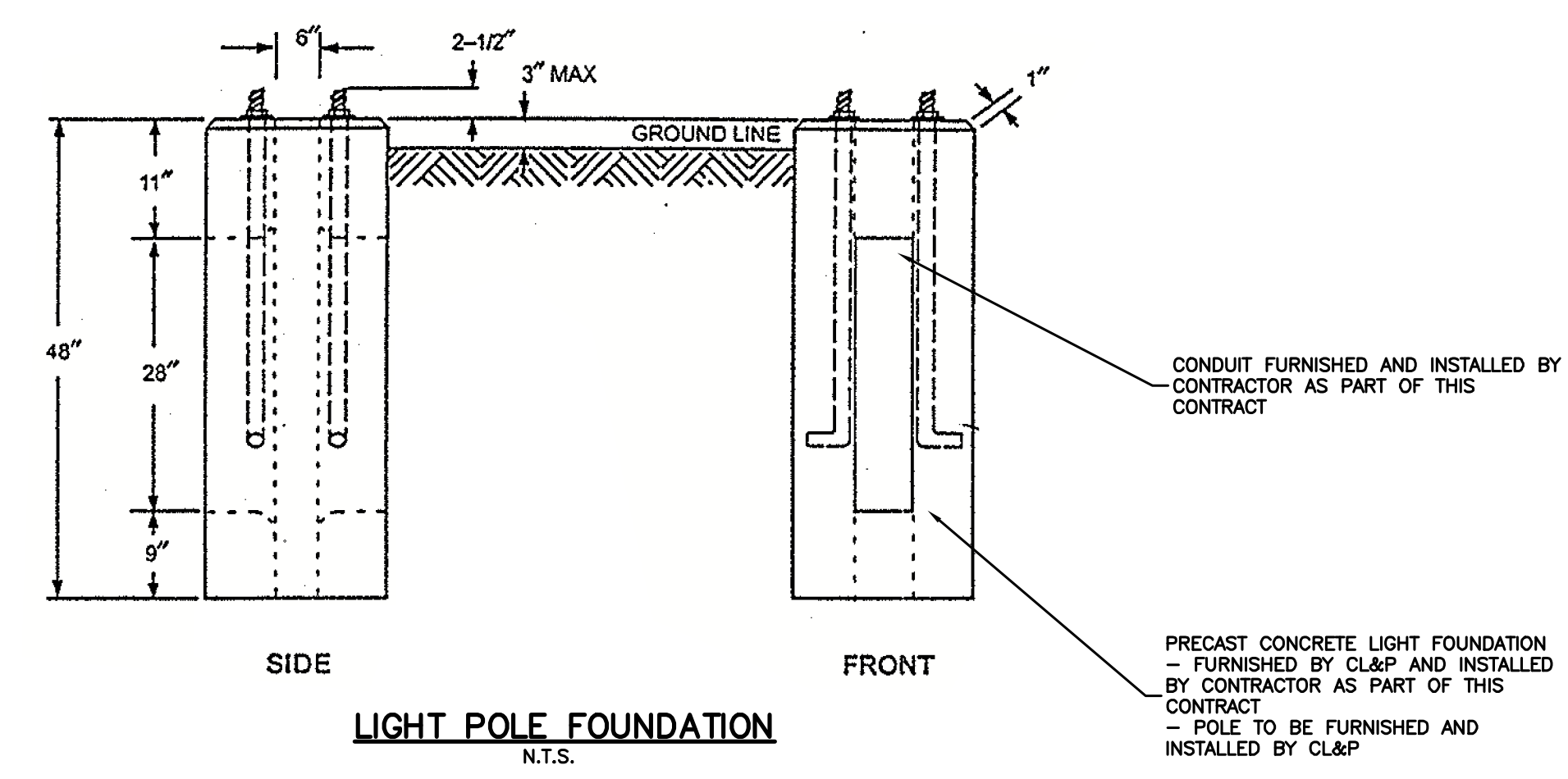


- LIGHTING NOTES:**
- CL&P WILL FURNISH AND INSTALL DECORATIVE LIGHT POLES & LUMINAIRE.
  - CL&P WILL PROVIDE CONCRETE LIGHT POLE BASES FOR CONTRACTOR TO INSTALL.
  - THE CONTRACTOR SHALL INSTALL CL&P FURNISHED CONCRETE BASES AND COORDINATE AVAILABILITY OF BASES WITH CL&P.
  - THE CONTRACTOR SHALL FURNISH AND INSTALL CONDUIT FOR LIGHTING.
  - CONTRACTOR SHALL FURNISH AND INSTALL PHOTO SENSORS COMPATIBLE WITH THE TWIST LOCK RECEPTACLE FOR ALL LUMINAIRES.
  - CL&P WILL FURNISH AND PULL WIRE FOR LIGHTING.
  - INSTALL GROUND ROD AT TIME OF BASE INSTALLATION. GROUND ROD AND CONNECTOR SHALL BE BELOW GRADE WITH #6 COPPER GROUND WIRE RUN UP THROUGH THE CENTER OF THE BASE.
  - CONTRACTOR TO INSTALL ALL CONCRETE LIGHT POLE FOUNDATIONS; PLUMB AND LEVEL AS FURNISHED BY CL&P; CONTRACTOR TO FURNISH AND INSTALL GROUND RODS AND CONDUIT PER PLAN AND DETAILS. CL&P TO FURNISH AND INSTALL LIGHT POLES AND PULL WIRE FOR CONNECTIONS.
  - CONTRACTOR SHALL VERIFY LOCATIONS OF EXISTING UTILITIES PRIOR TO INSTALLING LIGHT BASES. ANY CONFLICTS SHALL BE BROUGHT TO THE ATTENTION OF THE ENGINEER IMMEDIATELY FOR RESOLUTION.



**ELECTRICAL 1-LINE DIAGRAM**  
SCALE: N.T.S.

- NOTES:**
- PROVIDE STREET LIGHTING SERVICE RISER AT UTILITY POLE. INSTALL RIGID SWEEP, 10' RIGID RISER & FIRST STAND-OFF. FURNISH ADDITIONAL RIGID CONDUIT, STANDOFFS, GROUNDING CLAMP & WEATHERHEAD FOR INSTALLATION BY CL&P.
  - CL&P SHALL FURNISH PRECAST CONCRETE LIGHT POLE BASES FOR INSTALLATION BY CONTRACTOR.
  - CONTRACTOR SHALL FURNISH AND TRENCH ALL CONDUITS TO AND FROM LIGHT FIXTURE LOCATIONS. CL&P SHALL FURNISH AND INSTALL ALL WIRING TO LIGHT FIXTURES. CL&P SHALL INSTALL AND CONNECT ALL LIGHT POLES.
  - CONTRACTOR SHALL PROVIDE HANDHOLE AT EACH LIGHT POLE.



SILVER / PETRICELLI + ASSOCIATES  
Architects and Engineers  
3100 Whitney Avenue, Hamden, CT 06518-2140  
Tel: 203.230.9007 Fax: 203.230.8247  
silverpetr@aol.com

DESIGNED	EB	RB
CHECKED	ORANN	CHECKED

SCALE: AS SHOWN

DATE: MARCH 11, 2010

MHI PROJECT NO. 1047-36

CHESHIRE PROJECT NO. 1011-15

**EL-3**

SHEET IN SET: 13 OF 16

**REVISIONS**


**ELECTRICAL PLAN**  
WEST MAIN STREET  
STREETSCAPE IMPROVEMENTS  
PHASE II - RAILROAD AVENUE TO WARREN STREET  
CHESHIRE, CONNECTICUT